

PART LIST

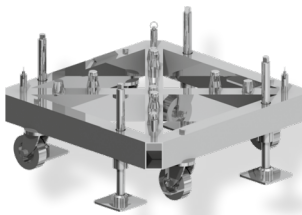
TT BP	1 pcs
TT SB	1 pcs
TT HS	4 pcs
TT TS	1 pcs
TT LO	4 pcs
TT34-50	1 pcs
TT34-200	2 pcs
TT34-300	1 pcs
TT SH	1 pcs

SPECIFICATIONS

SELF WEIGHT	120kg (264,6lb)
HEIGHT	7,5m (24,6ft)
LOAD CAPACITY	1000kg (2204,6ft)

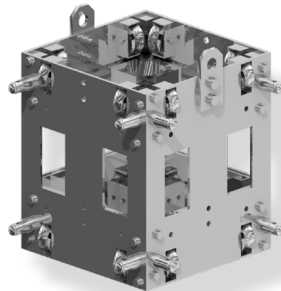
MAST SECTION TT34

MAIN TUBES	50x4mm (2x0,16")
BRACES	20x2mm (0,8x0,08")
ALLOY	EN-AW 6082 T6



TT BP

Steel base plate



TT SB

Sleeve block



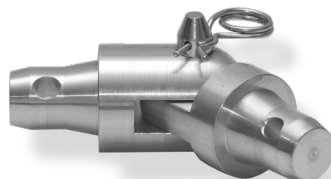
TT TS

Top section



TT LO

Long outrigger



TT HS

Hinge section